

Proposed variation to Consent
Taumatatotara Wind Farm Ltd

Waitomo District

GRAPHIC ATTACHMENTS

to accompany the Landscape and Visual Assessment of Jeremy Head
Registered NZILA landscape architect

June 18 2020





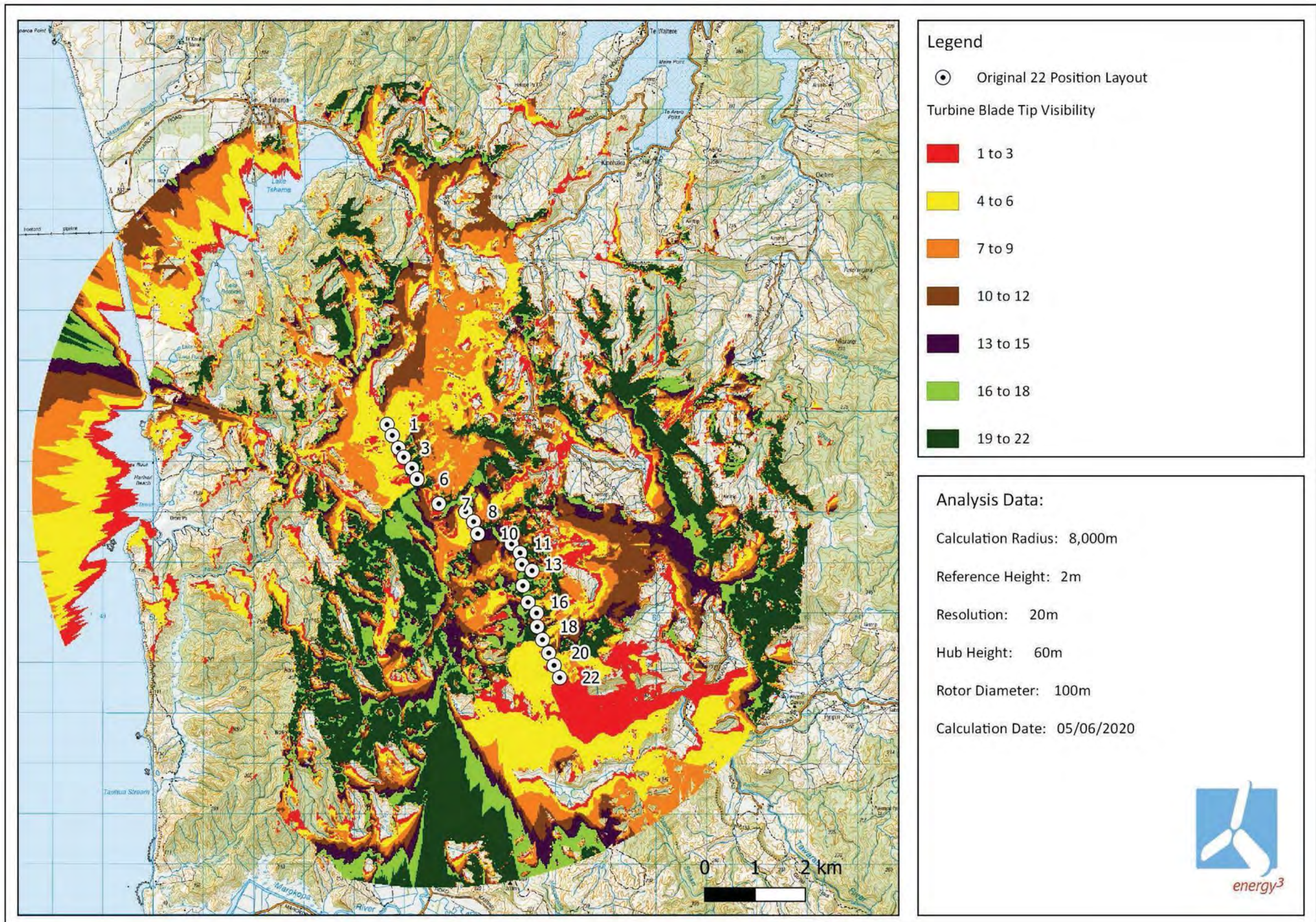
Awamarino Ltd (21)



House 17 (at left), house 16 (at right)



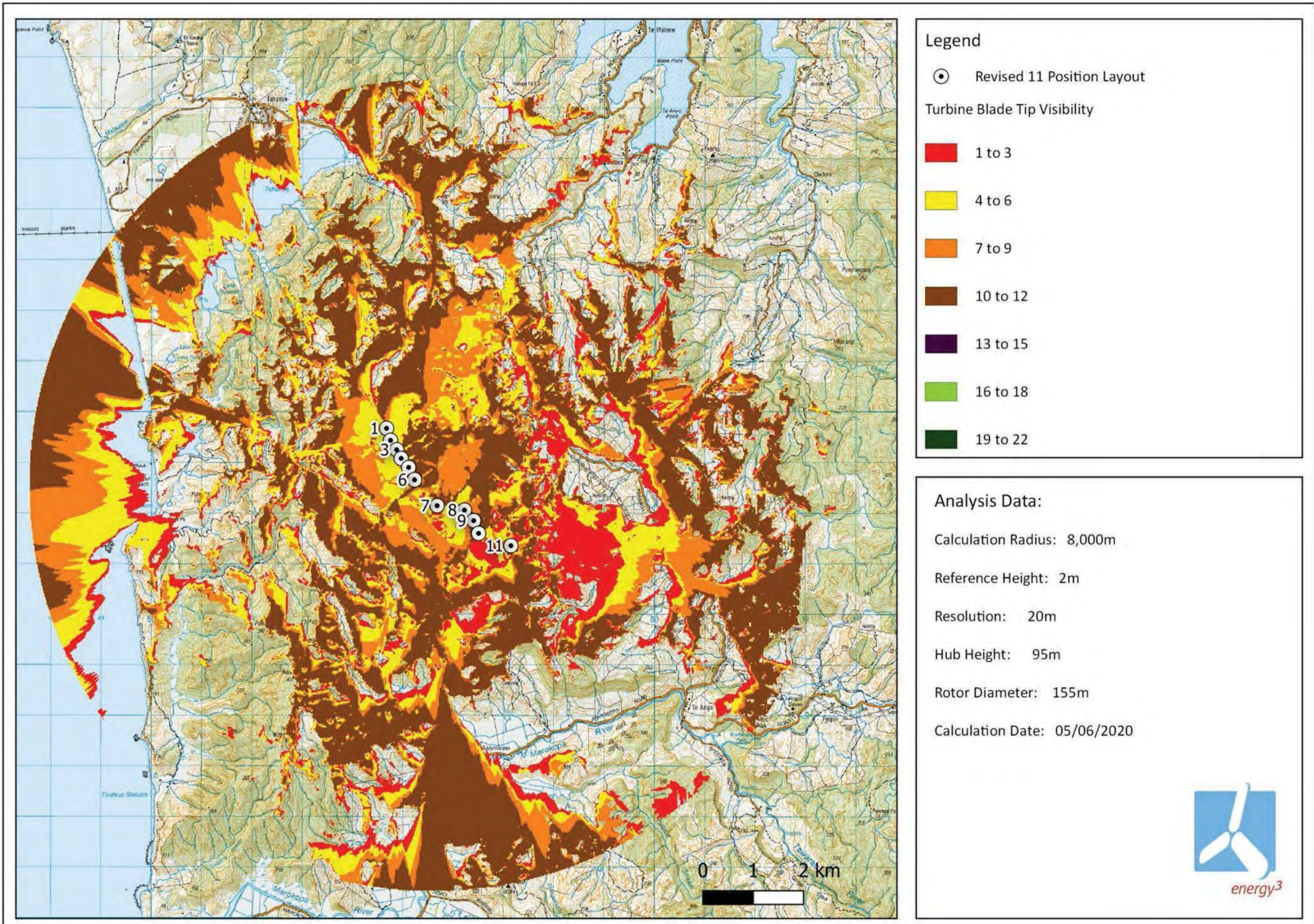
House 15



ATTACHMENT 2

ZONES OF THEORETICAL VISIBILITY MAPPING - CONSENTED SCHEME

(FROM FIGURE 11 MAP BY ENERGY3 SERVICES LTD REPORT PROVIDED BY APPLICANT)



Legend

⊙ Revised 11 Position Layout

Turbine Blade Tip Visibility

- 1 to 3
- 4 to 6
- 7 to 9
- 10 to 12
- 13 to 15
- 16 to 18
- 19 to 22

Analysis Data:

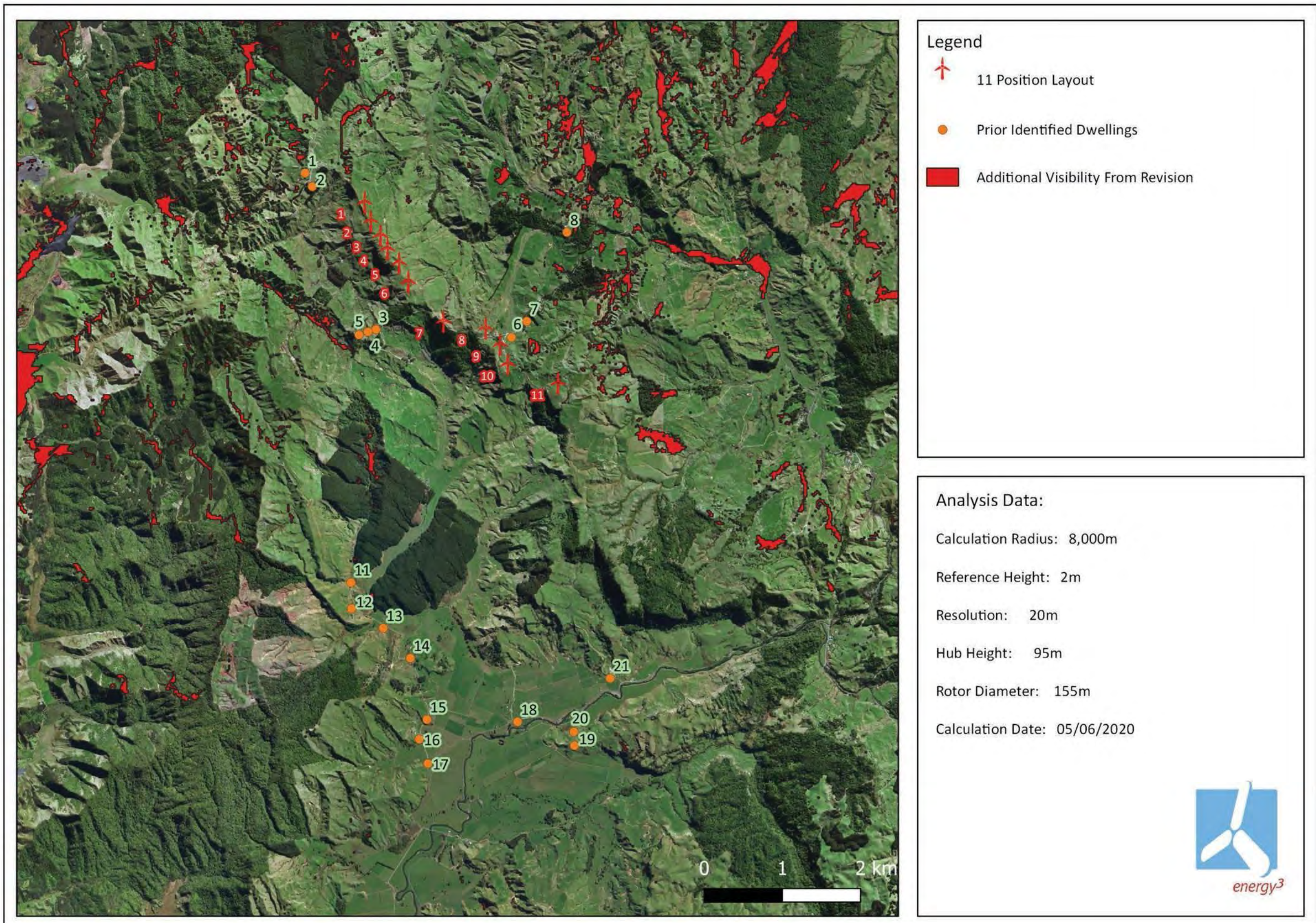
- Calculation Radius: 8,000m
- Reference Height: 2m
- Resolution: 20m
- Hub Height: 95m
- Rotor Diameter: 155m
- Calculation Date: 05/06/2020



ATTACHMENT 3

ZONES OF THEORETICAL VISIBILITY MAPPING - PROPOSAL

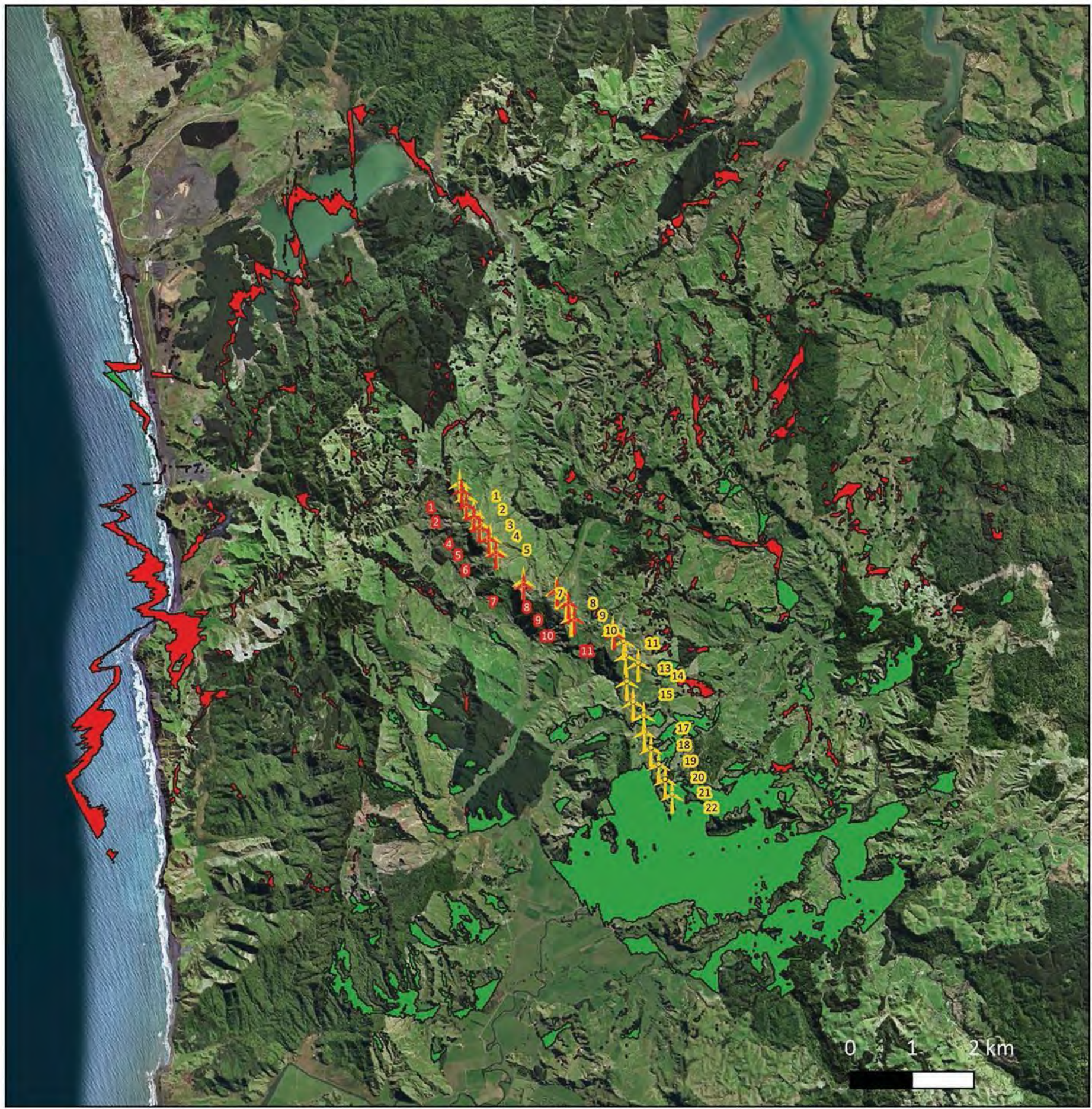
(FROM FIGURE 12 MAP BY ENERGY3 SERVICES LTD REPORT PROVIDED BY APPLICANT)




ATTACHMENT 4

ZONES OF THEORETICAL VISIBILITY MAPPING - NETT VISIBILITY INCREASE

(FROM FIGURE 13 MAP BY ENERGY3 SERVICES LTD REPORT PROVIDED BY APPLICANT)



Legend

-  Revised 11 Position Layout
-  Original 22 Position Layout
-  Additional visibility from 172.5m TH turbines
-  Reduced visibility moving to 172.5m TH turbines

Analysis Data:

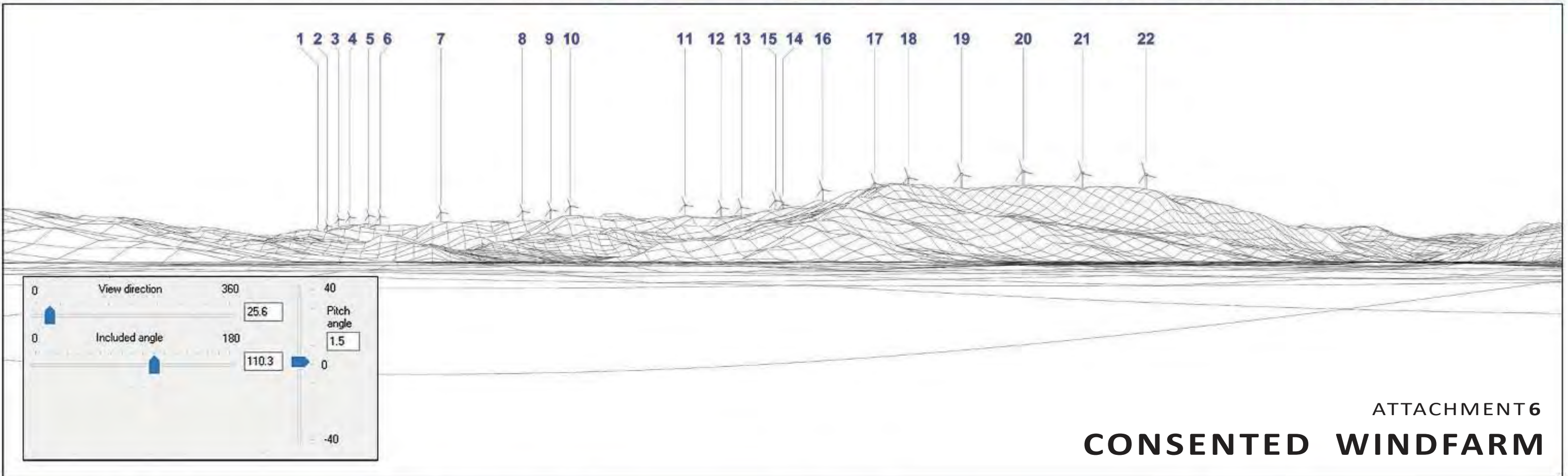
- Calculation Radius: 8,000m
- Reference Height: 2m
- Resolution: 20m
- Hub Height: 95m
- Rotor Diameter: 155m
- Calculation Date: 05/06/2020



ZONES OF THEORETICAL VISIBILITY MAPPING - VISIBILITY VARIANCE

(FROM FIGURE 10 MAP BY ENERGY3 SERVICES LTD REPORT PROVIDED BY APPLICANT)

Viewpoint 4 Recommended Viewing Distance 13.9cm when printed A3 Landscape (40cm image width)



ATTACHMENT 6
CONSENTED WINDFARM

Tuamatotara Windfarm

Photomontages from
Viewpoint 4
Coutts Road Corner

Photomontage details:

- Grid Reference - 2665716 East
- 6324334 North
- Nearest Turbine - 3280 m
- Turbines Visible - 20
- Rotor Diameter - 100 m
- Tip Height - 110 m

Viewpoint Map



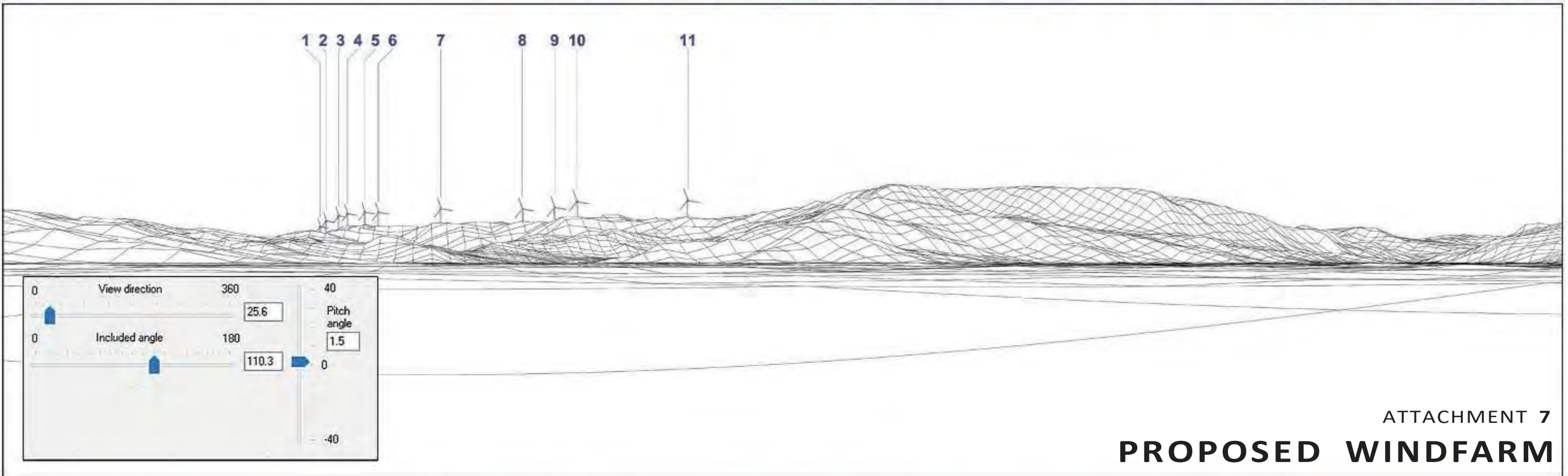
Prepared By:

Energy3 Services Limited



For:

Viewpoint 4 Recommended Viewing Distance 13.9cm when printed A3 Landscape (40cm image width)



ATTACHMENT 7

PROPOSED WINDFARM

Tuamatotara Windfarm

Photomontages from
Viewpoint 4
Coutts Road Corner

Photomontage details:

- Grid Reference - 2665716 East
- 6324334 North
- Nearest Turbine - 3280 m
- Turbines Visible - 11
- Rotor Diameter - 155 m
- Tip Height - 172.5 m

Viewpoint Map



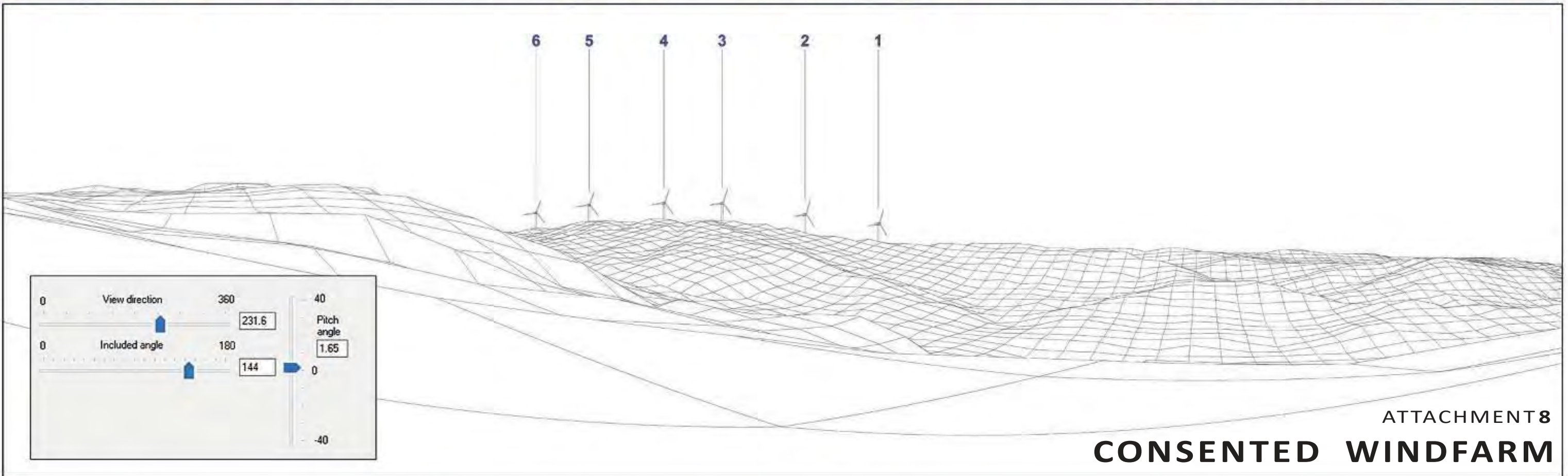
Prepared By:

Energy3 Services Limited



For:

Viewpoint 7 Recommended Viewing Distance 6.5cm when printed A3 Landscape (40cm image width)



ATTACHMENT 8
CONSENTED WINDFARM

Tuamatotara Windfarm

Photomontages from
Viewpoint 7
Taharoa Road

Photomontage details:

- Grid Reference - 2666575 East
- 6332420 North
- Nearest Turbine - 2006 m
- Turbines Visible - 6
- Rotor Diameter - 100 m
- Tip Height - 110 m

Viewpoint Map



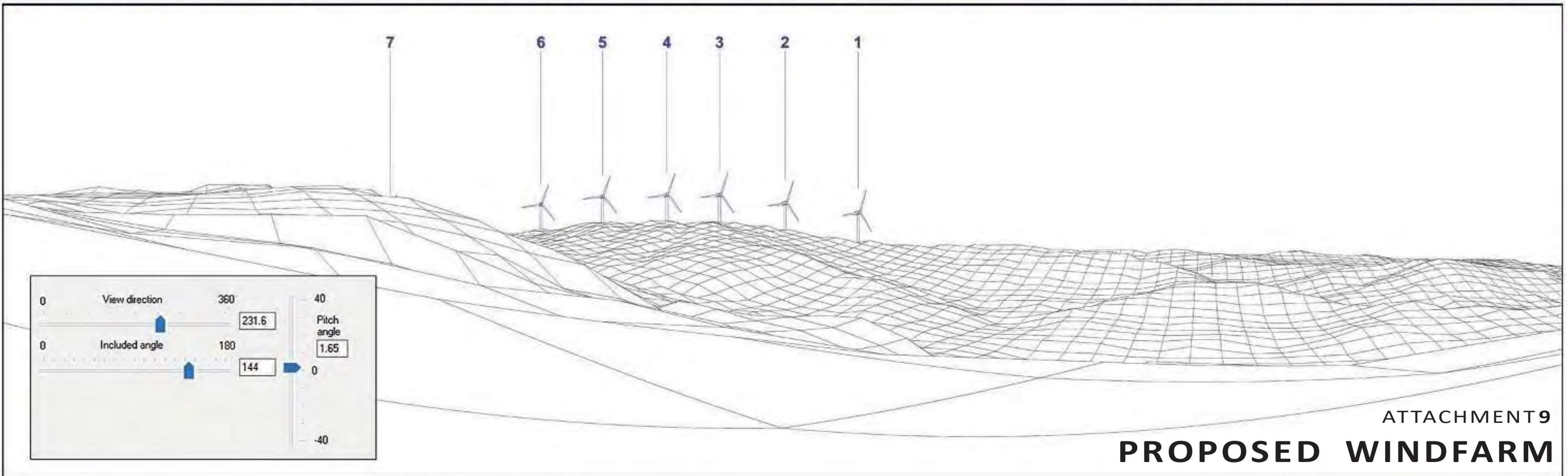
Prepared By:

Energy3 Services Limited



For:

Viewpoint 7 Recommended Viewing Distance 6.5cm when printed A3 Landscape (40cm image width)



Tuamatotara Windfarm

Photomontages from
Viewpoint 7
Taharoa Road

Photomontage details:

- Grid Reference - 2666575 East
- 6332420 North
- Nearest Turbine - 2006 m
- Turbines Visible - 7
- Rotor Diameter - 155 m
- Tip Height - 172.5 m

Viewpoint Map



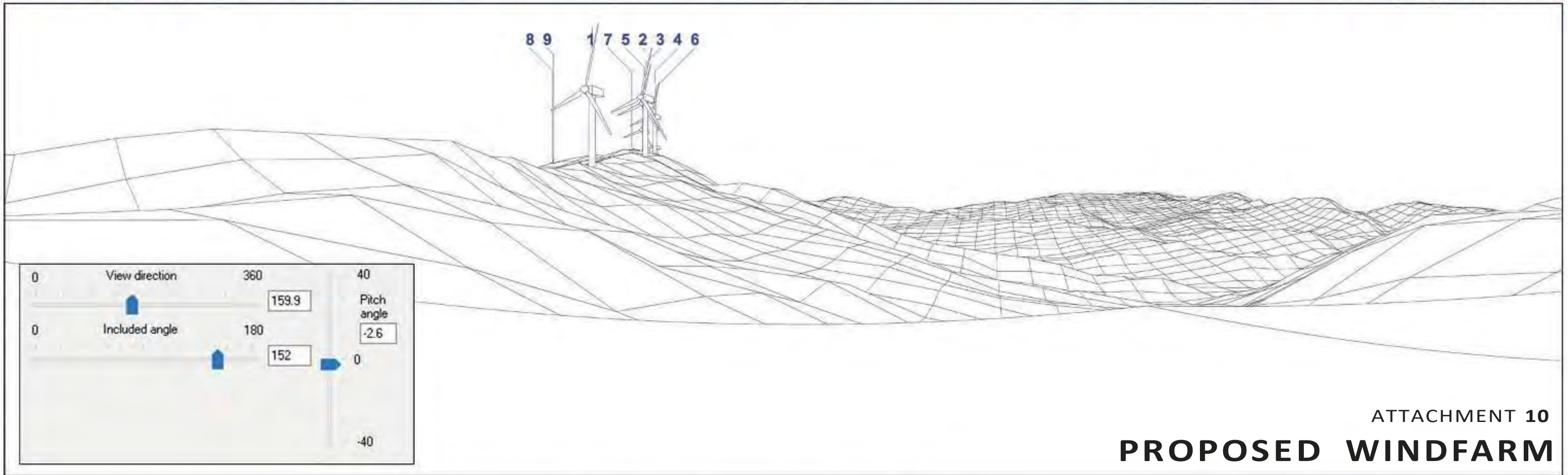
Prepared By:

Energy3 Services Limited



For:

Viewpoint 1 Recommended Viewing Distance 5cm when printed A3 Landscape (40cm image width)



ATTACHMENT 10

PROPOSED WINDFARM

Tuamatotara Windfarm

Photomontages from
Viewpoint 1
TM Station Ltd

Photomontage details:

- Grid Reference - 2664407 East
- 6331926 North
- Nearest Turbine - 723 m
- Turbines Visible - 9
- Rotor Diameter - 155 m
- Tip Height - 172.5 m

Viewpoint Map



Prepared By:

Energy3 Services Limited



For: